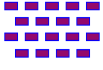




## Raummaße und Bestuhlungsvarianten


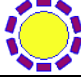
| Seminarräume                  | Fläche             | Länge x Breite   | (Bau)-<br>Höhe |  |  |  |
|-------------------------------|--------------------|------------------|----------------|---|---|---|
| <b>Bernhard v. Langenbeck</b> | 123 m <sup>2</sup> | 14,70 m x 8,40 m | 2,80 m         | 90  | 60  | 36  |
| <b>Rudolf Virchow</b>         | 75 m <sup>2</sup>  | 11,80 m x 6,40 m | 2,80 m         | 60  | 30  | 26  |

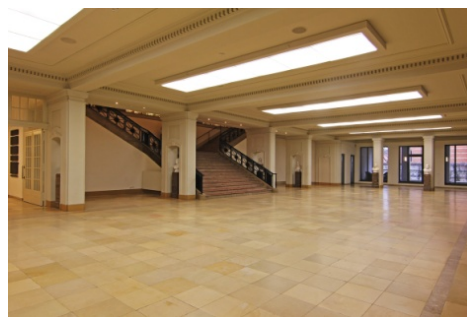


Raum "Bernhard von Langenbeck"



Raum "Rudolf Virchow"

| Weitere Flächen                                | Fläche             | Länge x Breite | (Bau)-<br>Höhe |  |  |
|--|--------------------|----------------|----------------|---|---|
| <b>Foyer EG</b><br>(ohne Nischen u. Garderobe) | 248,80             | 27,40 x 9,05   | 3,20           | 350-400   | 180   |
| <b>Wandelhalle 1. OG</b>                       | 112,33             | 23,99 x 4,70   | 2,60           | 90-100  | -   |
| <b>Wandelhalle 2. OG</b>                       | 120 m <sup>2</sup> | 24,0 m x 5,0 m | 2,80 m         | -   | -   |



**Foyer Erdgeschoss**



**Wandelhalle 1. OG**



**Wandelhalle 2. OG**